

InterPort™ ethernet service activation software

Kuatro's InterPort Ethernet Service Activation (SAT) Software is a portable implementation of the service activation and throughput test methodologies described in ITU-T Y.1564-2011 and RFC2544 specifications.

Y.1564-2011 specifications define out of service test methodologies used by Service Providers of Carrier Ethernet Networks to assess the performance attributes of an Ethernet service prior to customer delivery or after for troubleshooting purposes. Kuatro's InterPort SAT module is a platform independent solution which can be incorporated in a variety of systems including Carrier Ethernet access and aggregation products, mobile backhaul products, NIDs and Carrier Ethernet Test Equipment.

features

InterPort Ethernet SAT implementation provides a unified API which allows the system to provision, initiate and retrieve the results of different service activation tests. Kuatro InterPort Ethernet SAT module seamlessly integrates with Kuatro InterPort Service OAM module to provide a standard based tool for latency and jitter measurements.

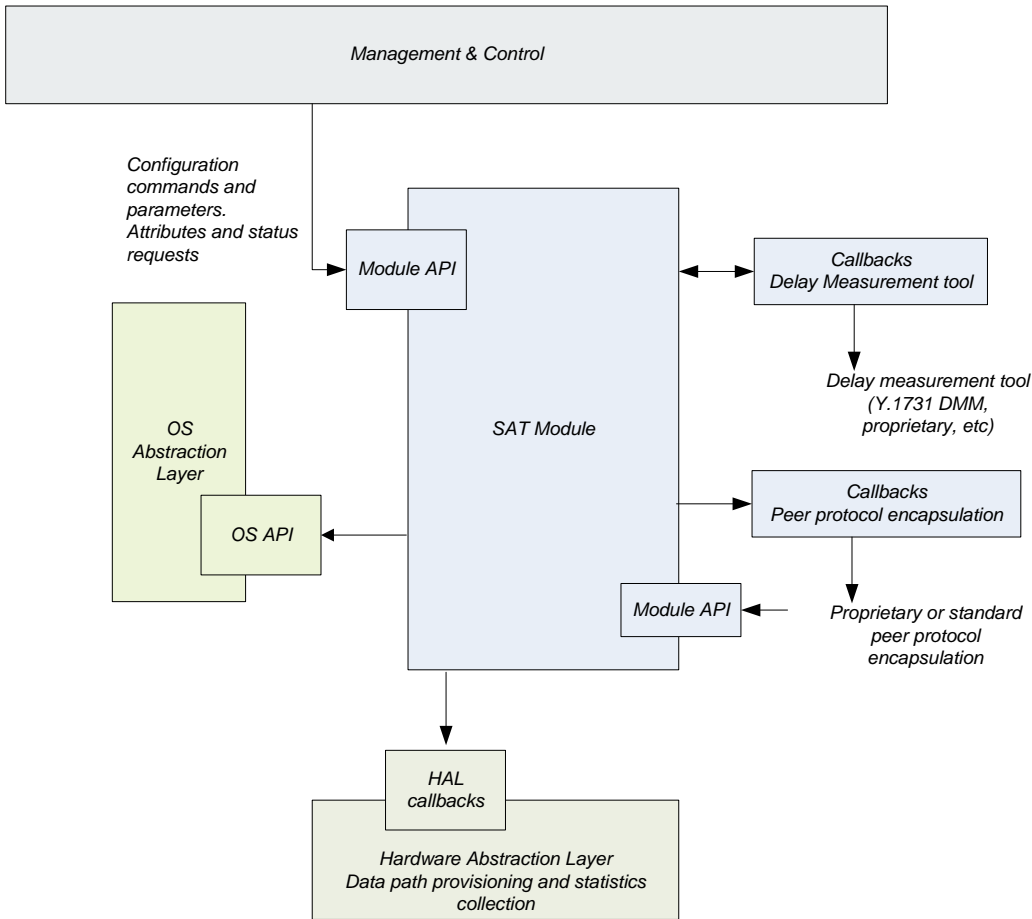
benefits

- > Up to 50% time to market reduction
- > Up to 35% savings in development costs.
- > Pre-tested software modules minimize project risks.
- > Integrated solution delivery by Kuatro's R&D design services.
- > Portable to various OS and hardware platforms.

Feature	InterPort™ Ethernet Service Activation Software
Supports multiple SA profiles	yes
Fully configured L2 frame formats	yes
Fully configured L3 frame formats	yes
Parallel test sessions	yes
Allows CoS level granularity for test sessions	yes
Throughput tests with configurable rate steps	yes
Policing tests	yes
Colour blind CIR tests	yes
CBS tests	yes
Interleaved latency and jitter measurements	yes
Standard or proprietary delay measurement tools	yes
Reflector and initiator mode	yes
Uni-directional tests	yes

architecture

Ethernet SAT module has well defined interfaces including OS abstraction APIs, Hardware Abstraction Layer (HAL) callbacks and APIs to management and control layer software. APIs and callbacks are defined using abstract entities towards delay measurement tools (typically, SOAM Y.1731 DMM procedures) and towards standard or proprietary encoding schemes for inband SAT peer communication. These APIs enable the portability to various platforms using different operating systems and different data plane designs whether FPGA, network processor, Ethernet silicon or virtual platform based.



supported standards

- > ITU-T Y.1564 (2011)
- > RFC 2544

deliverables

- > Source code in C
- > Programmer's Reference Guide
- > Porting Guide and Release Notes



contact us

E: info@kuatrotech.com
 W: www.kuatrotech.com